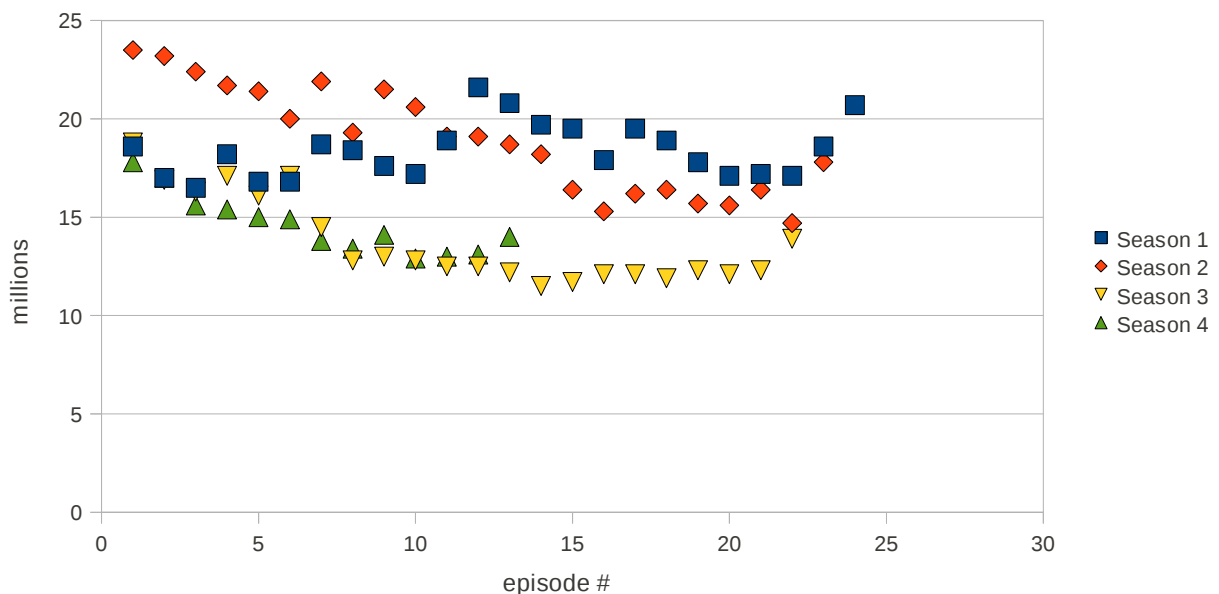


## Frequency distributions of LOST TV series viewers

	Season 1	position	Season 2	position	Season 3	position	Season 4	position
1	18.6	14	23.5	23	18.8	22	17.8	13
2	17	4	23.2	22	16.9	19	17	12
3	16.5	1	22.4	21	16.3	18	15.6	11
4	18.2	12	21.7	19	17.1	20	15.4	10
5	16.8	2	21.4	17	16.1	17	15	9
6	16.8	2	20	15	17.1	20	14.9	8
7	18.7	16	21.9	20	14.5	16	13.8	5
8	18.4	13	19.3	14	12.8	12	13.4	4
9	17.6	9	21.5	18	13	14	14.1	7
10	17.2	7	20.6	16	12.8	12	12.9	1
11	18.9	17	19.1	12	12.5	10	13	2
12	21.6	24	19.1	12	12.5	10	13.1	3
13	20.8	23	18.7	11	12.2	7	14	6
14	19.7	21	18.2	10	11.5	1		
15	19.5	19	16.4	6	11.7	2		
16	17.9	11	15.3	2	12.1	4		
17	19.5	19	16.2	5	12.1	4		
18	18.9	17	16.4	6	11.9	3		
19	17.8	10	15.7	4	12.3	8		
20	17.1	5	15.6	3	12.1	4		
21	17.2	7	16.4	6	12.3	8		
22	17.1	5	14.7	1	13.9	15		
23	18.6	14	17.8	9				
24	20.7	22						

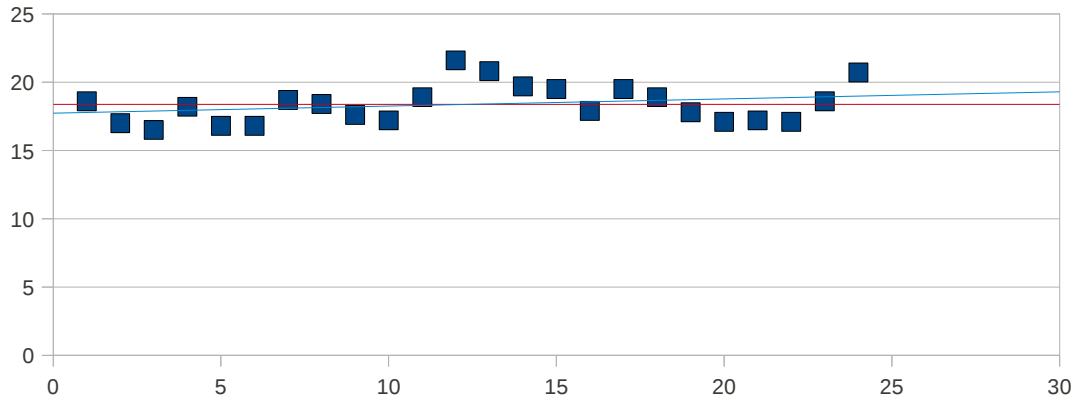
Max	21.6		23.5		18.8		17.8
Mean	18.38		18.92		13.75		14.62
Median	18.3		19.1		12.65		14.1
1 <sup>st</sup> quartile	17.18		16.4		12.13		13.4
2 <sup>nd</sup> quartile	18.3		19.1		12.65		14.1
3 <sup>rd</sup> quartile	19.05		21.45		15.7		15.4
interquartile range	1.88		5.05		3.58		2
Mode	16.8	17.1	16.4		12.1		no mode :
6 modal values :	17.2	18.6	value		value		no repeated value
6 pairs of repeated values	18.9	19.5	repeated 3 times		repeated 3 times		

LOST - viewers

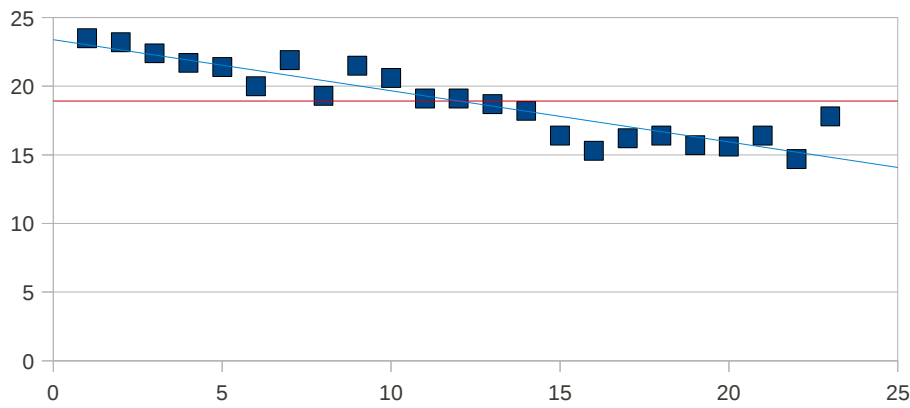


# Frequency distributions of LOST TV series viewers

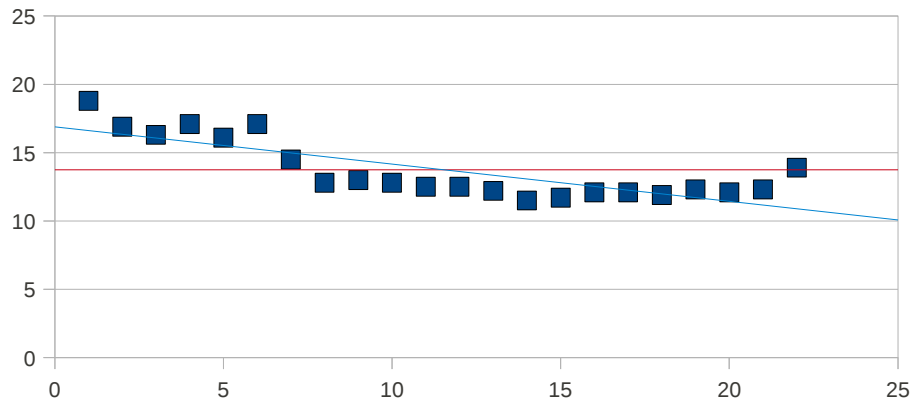
## Season 1



## Season 2



## Season 3



## Season 4

